



# UPCOMING EVENTS...

## OCTOBER-DECEMBER 2025



**OCTOBER  
1ST**

10.00-13.00

### Anstice advice and information stand

Please join a member of the Autism Hub Staff at the Anstice in Madeley for a drop-in information and guidance session on pre and post diagnostic ASD support.

**The Anstice Madeley, Park Avenue, TF7 5BB**



**OCTOBER  
8TH**

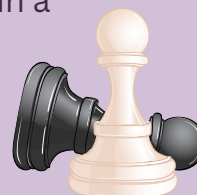
17.00-18.00

**NOVEMBER  
5TH**

### All Age Chess Club

A welcoming club for all ages and abilities to enjoy the game of chess. Whether you're a beginner wanting to learn or an experienced player looking for a challenge, come along to play, share tips, and connect with others in a friendly environment.

**Family Zone, Suite 12 & 15 Hazledine House, Central Square, Telford Centre, Telford, Shropshire, TF3 4JL**



**OCTOBER  
22TH**

**NOVEMBER  
19TH**

**OCTOBER  
7TH**

14.30-16.30

### Autism Friendly Cookery Course

Book your space on our four week cookery course. Learn how to prepare easy healthy meals that focus on reducing food waste, saving time and energy.

### Pre Booking Essential

**32 High Street Madeley, Telford, TF7 5AR**



**OCTOBER  
14TH**

**OCTOBER  
28TH**



**OCTOBER  
2ND**

13.00-15.00

### Wellness Walk at Granville Country Park

Please join us for a gentle autumn walk around Telford's Granville Country Park.

If the weather is cold don't forget to wrap up warm.

We will meet outside the

**Granville Country Park, Granville Road Donnington, Telford, TF2 7QG**



If you would like to attend any of our Upcoming Social Events, please contact us via. email; [admin@telfordautismhub.org.uk](mailto:admin@telfordautismhub.org.uk) or call us directly on 01952 916109.

# OCTOBER-DECEMBER 2025

**OCTOBER  
9TH**

13.00-15.00



## Autumnal Crafts



Join us for a cozy creative session where we'll make seasonal decorations inspired by autumnal colours, leaves, pumpkins, and harvest themes. Enjoy a fun way to welcome autumn and take home your own handmade creations.



**Family Zone, Suite 12 & 15 Hazledine House, Central Square, Telford Centre, Telford, Shropshire, TF3 4JL**

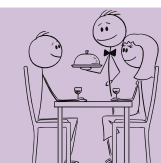
**OCTOBER  
16TH**

17.30-19.00

## Supper Club

Join us for an evening of tasty food, the opportunity to meet new friends and socialise, in a safe and relaxing environment. Each Month we will have a two course menu with vegetarian/vegan options available.

£10 per person with a soft drink included  
Booking essential.



**£ - There will be a cost involved for this event**

**Address - 32 High Street, Madeley, Telford, TF7 5AR**

**OCTOBER  
17TH**

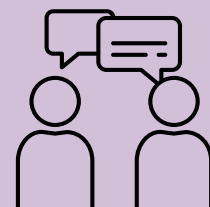
11.00-13.00

## Information, Advice and Guidance Drop-In

**Meet a range of professionals who can provide support and guidance**

- Education Employment Advisory Support Team (Job Box)
- TELFORD MIND
- Adult Social Care
- The Healthy Lifestyles Team Telford:
- Job Centre Plus

**Address - Family Zone, Suite 12 & 15 Hazledine House, Central Square, Telford Centre, Telford, Shropshire, TF3 4JL**



**OCTOBER  
21ST**

15.30-17.45



## Silver Threads Drop-in

The Silver Threads Drop-In is a welcoming space where older adults can access support and reliable information. Our team offers clear advice and guidance on local services and activities, with signposting to specialist help when needed. We are here to help you stay informed, supported, and connected to your community.

**Address - Silver Threads Hall, Next to Lawndale, Wellington Road, Donnington, Telford, TF2 8AD**



If you would like to attend any of our Upcoming Social Events, please contact us via. email; [admin@telfordautismhub.org.uk](mailto:admin@telfordautismhub.org.uk) or call us directly on 01952 916109.



# OCTOBER-DECEMBER 2025



**OCTOBER  
23RD**

13.00-15.00

**£7 Admission**

## Exotic Zoo Visit with Pumpkin Patch

Join us for an exciting hands-on experience with the Exotic Zoo team! Get up close with a variety of amazing animals, learn fascinating facts from the keepers, and enjoy a chance to explore the seasonal pumpkin patch. A perfect mix of fun, learning, and autumn magic for the whole family.

**Meeting at Hinkshay Road, Dawley, Telford, TF4 3GZ**



**OCTOBER  
25TH**

9.00-18.00

## Charity Day Celebrations

Telford Shopping Centre are supporting Telford CVS in raising funds to provide services to children and adults living across Telford. There will be fun activities including a face painter, Balloon modelling, raffle and tombola.

All proceeds from the day will go to Telford and Wrekin CVS. Pop along and get involved, lots for all ages to do

**Location: Outside Primark and M&S**



**OCTOBER  
28TH**

18.00-19.00

## Men's Group

A supportive group for autistic men to meet, share experiences, and connect in a friendly environment. The group offers a safe space to talk, socialise, and support one another, with opportunities to discuss topics that matter most to members.

**Activity to be decided nearer the time so look out for updates.**



**OCTOBER  
29TH**

17.30-19.00

## Autistic Women's Group (WAG)

Our Autistic Women's group is a safe and friendly space with like minded individuals, so please join us in a relaxed, accepting group for a drink & a chat among others with shared experiences.

We invite individuals who identify as female, Femme presenting or assigned female at birth

**Address- The Wakes, Theatre Square, Oakengates, Telford, TF2 6EP**



If you would like to attend any of our Upcoming Social Events, please contact us via. email; [admin@telfordautismhub.org.uk](mailto:admin@telfordautismhub.org.uk) or call us directly on 01952 916109.



# OCTOBER-DECEMBER 2025



**OCTOBER  
30TH**

13.00-15.00

## Autism Awareness Workshop

Our Autism Awareness Workshop helps build understanding and inclusion. Learn about autism, challenge misconceptions, and explore practical strategies to support autistic individuals in everyday life.

**Family Zone, Suite 12 & 15 Hazledine House, Central Square, Telford Centre, Telford, Shropshire, TF3 4JL**



**OCTOBER  
30TH**

17.00-18.30

## SYNAPSE Youth Group

If you are aged 16-24 then please join us for our monthly activity.

**Activity to be decided nearer the time so look out for updates.**

**Family Zone, Suite 12 & 15 Hazledine House, Central Square, Telford Centre, Telford, Shropshire, TF3 4JL**



**NOVEMBER  
4TH**

14.30-16.30

## Autism Friendly Cookery Course

Book your space on our four week cookery course. Learn how to prepare easy healthy meals that focus on reducing food waste, saving time and energy.

**NOVEMBER  
11TH**



## Pre-Booking Essential

**32 High Street Madeley, Telford, TF7 5AR**



**NOVEMBER  
25TH**

**NOVEMBER  
6TH**

13.00-15.00

## Wellness Walk

Join the Adult Autism Hub staff for a gentle, relaxing walk around Telford Town Park. Take in the sights and sounds of nature, enjoy some fresh air, and spend some time connecting with others in a calm, supportive environment.



**We will meet at Southwater one, outside the Library for a 1pm start.**

**E - There will be a cost involved for this event**



If you would like to attend any of our Upcoming Social Events, please contact us via. email; [admin@telfordautismhub.org.uk](mailto:admin@telfordautismhub.org.uk) or call us directly on 01952 916109.





# OCTOBER-DECEMBER 2025



**NOVEMBER  
13TH**

18:00-19:30

## Seasonal Joint Quiz Night

Come along and join the Autism Hub staff for an enjoyable evening of socialising at our Quiz Night! This friendly event is a chance to meet others, share some laughs, and test your knowledge with a range of quiz questions. A light buffet will be provided, so you can relax with food and refreshments while taking part. Everyone is welcome—we'd love to see you there!



**Cost - £2.50 child and £3.00 adult**

**Please book your space for this as we have limited spaces available.**

**NOVEMBER  
18TH**

15:30-17:45

## Silver Threads Drop-in

The Silver Threads Drop-In offers a welcoming space access support, and find reliable information. Our team provides clear advice along with guidance on local services and activities. We also offer signposting to specialist help when needed. The drop-in is here to help you stay informed, supported, and part of the community.



**Address - Silver Threads Hall, Next to Lawndale, Wellington Road,, Donnington, Telford, TF2 8AD**

**NOVEMBER  
20TH**

17:30-19:00

## Supper Club

Join us for an evening of tasty food, the opportunity to meet new friends and socialise, in a safe and relaxing environment. Each Month we will have a two course menu with vegetarian/vegan options available.

£10 per person with a soft drink included  
Booking essential.



**£ - There will be a cost involved for this event**

**£ - There will be a cost involved for this event**



If you would like to attend any of our Upcoming Social Events, please contact us via. email; [admin@telfordautismhub.org.uk](mailto:admin@telfordautismhub.org.uk) or call us directly on 01952 916109.



# OCTOBER-DECEMBER 2025



**NOVEMBER  
21ST**

11.00-13.00

## Information, Advice and Guidance Drop-in

**Meet a range of professionals who can provide support and Guidance**

- Education Employment Advisory Support Team (Job Box)
- Telford Mind
- Adult Social Care
- The Healthy Lifestyles Team Telford
- Job Centre Plus



For those 16-18 with a diagnosis and 18 and over with a diagnosis or waiting for a diagnosis.

**Family Zone, Suite 12 & 15 Hazledine House, Central Square, Telford Centre, Telford, Shropshire, TF3 4JL**

**NOVEMBER  
25TH**

14.30-16.30

## Autism Friendly Cookery Course

Book your space on our four week cookery course. Learn how to prepare easy healthy meals that focus on reducing food waste, saving time and energy.

**DECEMBER  
2ND**



**DECEMBER  
9TH**

## Pre Booking Essential



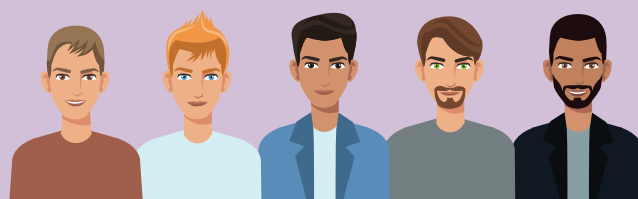
**NOVEMBER  
25TH**

18.00-19.00

## Men's Group Gaming Night

A supportive group for autistic men to meet, share experiences, and connect in a friendly environment. The group offers a safe space to talk, socialise, and support one another, with opportunities to discuss topics that matter most to members.

**Family Zone, Suite 12 & 15 Hazledine House, Central Square, Telford Centre, Telford, Shropshire, TF3 4JL**



**£ - There will be a cost involved for this event**



If you would like to attend any of our Upcoming Social Events, please contact us via. email; [admin@telfordautismhub.org.uk](mailto:admin@telfordautismhub.org.uk) or call us directly on 01952 916109.



# OCTOBER-DECEMBER 2025

**NOVEMBER  
26TH**

17:30 - 19:00

## Autistic Women's Group (WAG)

Our Autistic Women's support group is a safe and friendly space with like minded individuals, so please join us in relaxed, accepting group for a drink & a chat among others with shared experiences.

We invite individuals who identify as female, Femme presenting or assigned female at birth.

**Address - The Wakes, Theatre Square, Oakengates, Telford, TF2 6EP**



**NOVEMBER  
27TH**

13:00-15:00

## Social Communication Workshop

This workshop will take place in our Family Zone and delivered by Autism West Midlands.

**Address - Family Zone , Suite 12 & 15 Hazledine House , Central Square, Telford Centre, Telford, Shropshire, TF3 4JL**

**Pre Booking Essential**



**NOVEMBER  
27TH**

17:00-18:30

## SYNAPSE Youth Group

If you are aged 16-24 then please join us for our monthly activity. Activity to be decided nearer the time

**Address - Family Zone , Suite 12 & 15 Hazledine House , Central Square, Telford Centre, Telford, Shropshire, TF3 4JL**

**Pre Booking Essential**



**DECEMBER  
4TH**

13:00-15:00

## Wellness Walk

Join the Adult Autism Hub staff for a gentle, relaxing walk around Telford Town Park. Take in the sights and sounds of nature, enjoy some fresh air, and spend some time connecting with others in a calm, supportive environment.

**We will meet at Southwater one, outside the Library for a 1pm start.**



If you would like to attend any of our Upcoming Social Events, please contact us via. email; [admin@telfordautismhub.org.uk](mailto:admin@telfordautismhub.org.uk) or call us directly on 01952 916109.

# OCTOBER-DECEMBER 2025

**DECEMBER  
11TH-17TH**



## **Christmas Gift Wrapping Event Telford Shopping Centre**

For a donation Please bring along your festive gifts for one of our staff to wrap for you.  
All proceeds from the day will go to Telford and Wrekin CVS

Wednesday 11th December 9-8  
Thursday 12th December 9-8  
Friday 13th December 9-8  
Saturday 14th December 9-6  
Sunday 15th December 10-4.30  
Monday 16th December 9-8  
Tuesday 17th December 9-8



**DECEMBER  
11TH**

13.00-15.00

## **Sensory Awareness Workshop**

This workshop will take place in our Family Zone and delivered by Autism West Midlands.

**Address - Family Zone , Suite 12 & 15 Hazledine House , Central Square,  
Telford Centre, Telford, Shropshire, TF3 4JL**

**Pre Booking Essential**



**DECEMBER  
16TH**

15.30-17.45



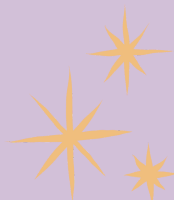
## **Silver Threads Drop-in**

The Silver Threads Drop-In is a welcoming space where older adults can access support and reliable information. Our team offers clear advice and guidance on local services and activities, with signposting to specialist help when needed. We are here to help you stay informed, supported, and connected to your community.

**Address - Silver Threads Hall, Next to Lawndale, Wellington Road,, Donnington,  
Telford, TF2 8AD**

**DECEMBER  
17TH**

17.30-19.00



## **Autistic Women's Group (WAG) Christmas Party!**

Our Autistic Women's group is a safe and friendly space with like minded individuals, so please join us in a relaxed, accepting group for a drink & a chat among others with shared experiences.

We invite individuals who identify as female, Femme presenting or assigned female at birth

**Address- The Wakes, Theatre Square, Oakengates, Telford, TF2 6EP**



*Christmas*  
**PARTY**

**£ - There will be a cost involved for this event**



If you would like to attend any of our Upcoming Social Events, please contact us via. email; [admin@telfordautismhub.org.uk](mailto:admin@telfordautismhub.org.uk) or call us directly on 01952 916109.

# OCTOBER-DECEMBER 2025

**DECEMBER  
18TH**

13.00-15.00

## **Festive Meal at the Grazing Cow**

Celebrate the season with us at The Grazing Cow! Enjoy a delicious festive menu with 2 courses for £27.49 or 3 courses for £30.99, or feel free to order from the regular menu. A £5 deposit per guest is required at the time of booking, which will be deducted from your final bill on the day. Pre-orders are required, and spaces are limited to 25 people on a first-come, first-served basis, so don't miss this chance to share great food and festive cheer!

**Address- Gresham Drive, Lawley, Telford, Shropshire, TF3 5ES**



**DECEMBER  
19TH**

11.00-13.00

## **Information, Advice and Guidance Drop-in** **Meet a range of professionals who can provide support and Guidance**

- Education Employment Advisory Support Team (Job box)
- Telford Mind
- Adult Social Care
- The Healthy Lifestyles Team Telford
- Job Centre Plus

For those 16-18 with a diagnosis and 18 and over with a diagnosis or waiting for a diagnosis.

**Family Zone, Suite 12 & 15 Hazledine House, Central Square, Telford Centre, Telford, Shropshire, TF3 4JL**



**DECEMBER  
29TH**

11.00-14.00

## **All Age Christmas Pantomime - Cinderella**

Join us for a magical Christmas pantomime of Cinderella, perfect for all ages. Packed with laughter, music, and festive fun, this timeless tale is brought to life with plenty of audience participation and holiday cheer. A wonderful way for families and friends to celebrate the season together.

**children's tickets - £18 Adults tickets - £18.50**

**Payment due by 17<sup>th</sup> October**

**Address - Telford International Centre.**



**£ - There will be a cost involved for this event**

**£ - There will be a cost involved for this event**



If you would like to attend any of our Upcoming Social Events, please contact us via. email; [admin@telfordautismhub.org.uk](mailto:admin@telfordautismhub.org.uk) or call us directly on 01952 916109.